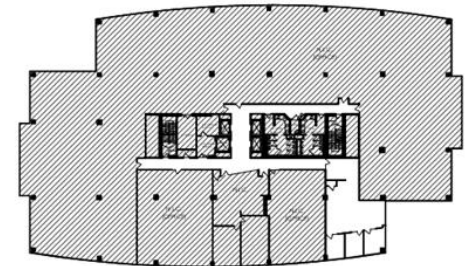


KEY PLAN



SPEC SUITE 425

485 HALF DAY ROAD BUFFALO GROVE, ILLINOIS

Date: 2/25/2019 Sq. Footage: 1,618 RSF

Scale: Not to Scale Issued for: Review



WHITNEY
ARCHITECTS, INC.
700 Commerce Drive | Suite 350
Oak Brook, IL 60823 | USA
T : 630.571.1118 | F : 630.571.0518
whitney-architects.com
IL CORPORATE LIC. 184-001580