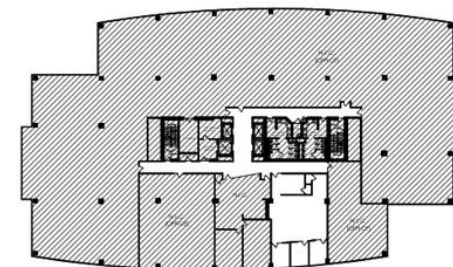


KEY PLAN



SPEC SUITE 430

485 HALF DAY ROAD BUFFALO GROVE, ILLINOIS

Date: 2/25/2019 Sq. Footage: 1,781 RSF

Scale: Not to Scale Issued for: Review

E:\475&485 E Half Day Road\Tenants\485 HDR 04 Spec Suites Revised\01 CAD\485 HDR 04 Spec Suites Revised\

— EXISTING PARTITION TO REMAIN
— NEW PARTITION

— EXISTING DOOR
— NEW DOOR



WHITNEY
ARCHITECTS, INC.
700 Commerce Drive | Suite 350
Oak Brook, IL 60022 | USA
T: 630.571.1118 | F: 630.571.0518
whitney-architects.com
IL CORPORATE LIC. 164-001580

Whitney Architects © 2019